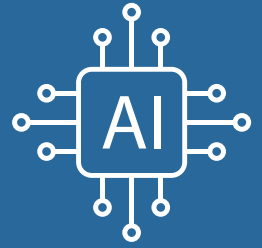


GUIDELINES FOR THE USE OF



Use district approved AI tools in a way that is consistent with school expectations.

Follow your teachers' guidelines on when and how to use AI to support your learning.

Use AI tools to support your learning and understanding, not to do the work for you.

Maintain your academic integrity - if you use AI tools to help you, make sure you say so.

Protect your privacy - do not enter any personal or private information into the AI tools.

Remember that AI tools occasionally produce biased or inaccurate information. Check for it.