

Student and Family Affordability Fund: 2022-23 Action Plan





Working Together to Support Students and Families

Current Context

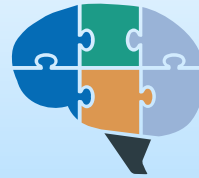
Minister of Education and Child Care, Jennifer Whiteside announced the introduction of the Student and Family Affordability Fund. The \$60 million provincial fund is intended to support students and families who are struggling with rising costs due to global inflation. The district has received an allocation of **\$1,251,529**. The funding is provided on a one-time basis for the 2022-2023 school year.

The fund requirements include:

- Consultation with local Indigenous rightsholders, to determine any unique needs for Indigenous learner, District Parent Advisory Councils (SPEAC), and “equity-deserving” communities to ensure the unique needs of all diverse student populations are met.
- Using the funds in as flexible, private and stigma free manner as possible.

Spending descriptors include:

- Spending on food security students and families in addition to any planned or budgeted spending on food and meals programs.
- Spending that provides family assistance by way of offsetting costs for such things as school supplies, education related fees, clothing/footwear required for school sports and other school activities etc.



The Sooke School District is comprised of a diverse demographic and accordingly sought understanding of the needs of various groups including, but not limited to, Indigenous partners, parents and newcomer and refugee populations.

Per Ministry of Education and Child Care direction, the District engaged in consultation with Indigenous partners, the Sooke Parents Education Advisory Council and other stakeholders to inform the development of this action plan. Consultations focused on developing an understanding of unique needs, prioritization of needs, barriers and stigma related concerns.

Input from stakeholders directly informed guiding principles and subsequent action steps set out in the District's Student and Family Affordability Fund Action Plan.

Guiding Principles



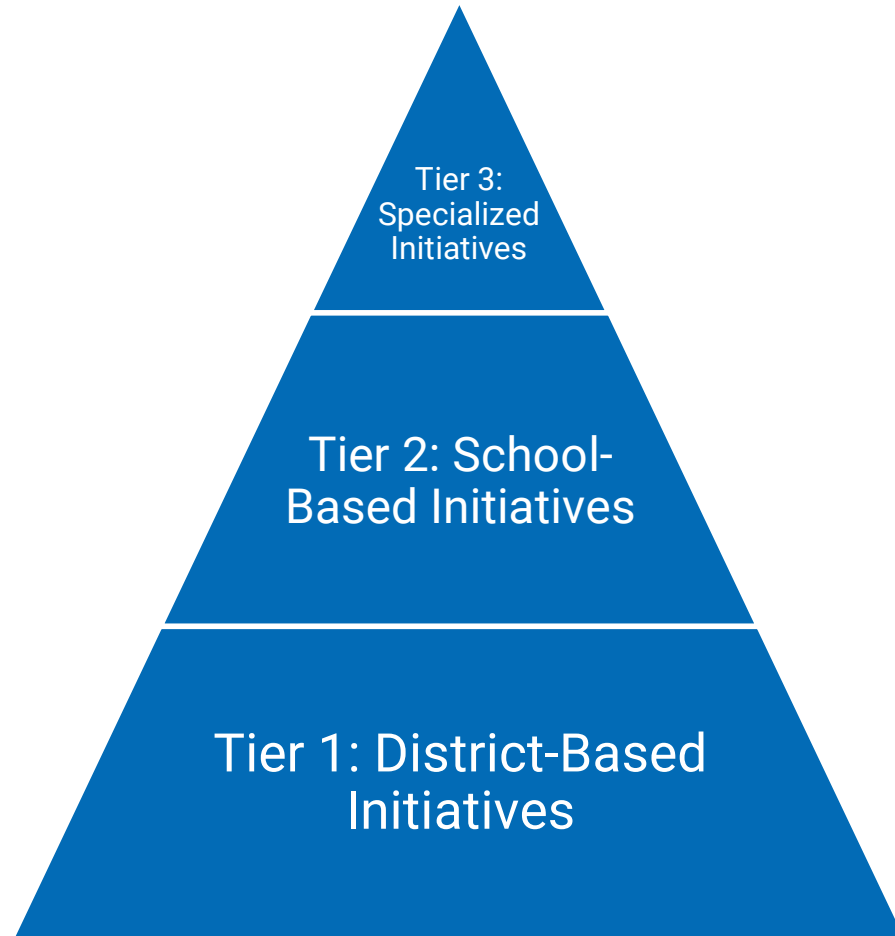
- Ensure that the funding is used in accordance with Ministry of Education and Child Care guidelines.
- Creatively use the funds in as flexible, private and stigma free manner as possible.
- Creatively use the funding to have as broad an impact as possible to ensure those most in need are supported.
- Develop a multi-pronged approach that is a blend of school based, district based and community partnership-based initiatives.
- Ensure ongoing consultation with stakeholders including, but not limited to, Indigenous Rights Holders, SPEAC and School PACs, Internal District Stakeholders and Community partner agencies.
- Ensure the action plan is organic and flexible and can be adapted to meet changing needs and overcome unanticipated barriers that may emerge.

Multi-Tiered Approach

Tier 1 – District-Based Initiatives: These initiatives are organized and implemented at the district level in consultation with district stakeholders and include selected educational program fee relief at the elementary, middle, and secondary school level; expansion and development of existing and new school food programs; expansion and development of partnerships with third party community partners.

Tier 2 – School-Based Initiatives: These initiatives are organized and implemented at the school level in consultation with local school stakeholders. Initiatives will focus on additional efforts to address food security, school supply costs, additional fee relief, access to clothing and equipment required for meaningful participation in school-based programs and activities.

Tier 3 – Specialized Initiatives: These initiatives are organized and implemented at the school and district level by specialized staff including our Safe and Healthy Schools team, in particular our team of School Based Social Workers. Initiatives will focus on additional efforts to address food security, school supply costs, additional fee relief, access to clothing and equipment required for meaningful participation in school-based programs and activities by those students and families most in need.





Tier 1: District Based Initiatives



Fee Relief: \$170,000+

The Affordability Fund is being used to offset universal education related fees at each school level.

Secondary School Universal Fees: The universal School Activity Fee will be waived for the 2022-23 school year. This fee is charged to offset costs related to student locks, lockers, school and classroom apps, and school activities and events.

Middle School Fees: The universal fees for ADST courses will be waived for the 2022-23 school year. These fees are charged to cover consumable materials used in each course area such as Textiles, Home Economics, Woodworking etc.

Elementary School Fees: Unlike middle and secondary schools, elementary do not publish fee schedules. However, throughout the course of the year costs may be incurred for educational field trips and events. Elementary schools will be provided funds in their school fund allocation to waive fees as broadly as possible in a stigma and barrier free manner.

Tier 1: District-Based Initiatives

Food Security and Student Family Assistance: \$400,000

The Affordability Fund is being used to address food security and other affordability issues for students and families. This is being actioned through new and existing community partnerships in several ways. Examples include:

Sooke Food Bank

JMS breakfast program; Grab and Go snack program for all interested schools; holiday hampers; other essentials

Sooke Family Resource Centre

Food, transportation and other life essentials provided via various services to local families

Military FRC

Support “connection time” for families during deployment, providing a meal, childcare and social time.



Setting the Table: School Food Program

This partnership is a new food security program aimed to delivery locally sourced prepared breakfast and lunches to schools. Committed partners include:

- SD62 school and district administrators
- SD62 culinary arts and food studies teachers
- Mustard Seed Food Security Distribution Centre
- Food Share Network
- Farm to School BC
- Victoria Community Food Hubs Society
- BC Chapter of the Coalition for Healthy School Food
- Island Health
- UVic School of Public Health and Social Policy

Goldstream Food Bank

Hampers, emergency food and household supplies - available via 3rd parties like SBSW.

Salvation Army

Food fridge and social time at Langford based drop-in resource centre. Weekly grocery bag available. Monthly and Holiday hampers.

BGC South VI

Through Community Intervention Coordinators, provide food security and other essentials (e.g., transportation) to youth/families during out of school time

Expansion of Current Programs

Includes, but not limited to, expansion of Truffles lunch program as well as expansion of Backpack Buddies program to all schools.



School Based Allocations: \$600,000

The significant portion of the Student and Family Affordability Fund is being distributed to individual schools to action in a manner that best suits their school community. Each school community has its own unique context and school staff will be working with school Indigenous partners, Parent Advisory Councils, and community partners to create plans to meet student and family needs. Funds are to be used to address food security and other affordability issues for students and families.

Allocations will be based on several factors including school enrollment and other criterion. Schools will be expected to develop an action plan and have the expectation of expending funds by June 30th, 2022.



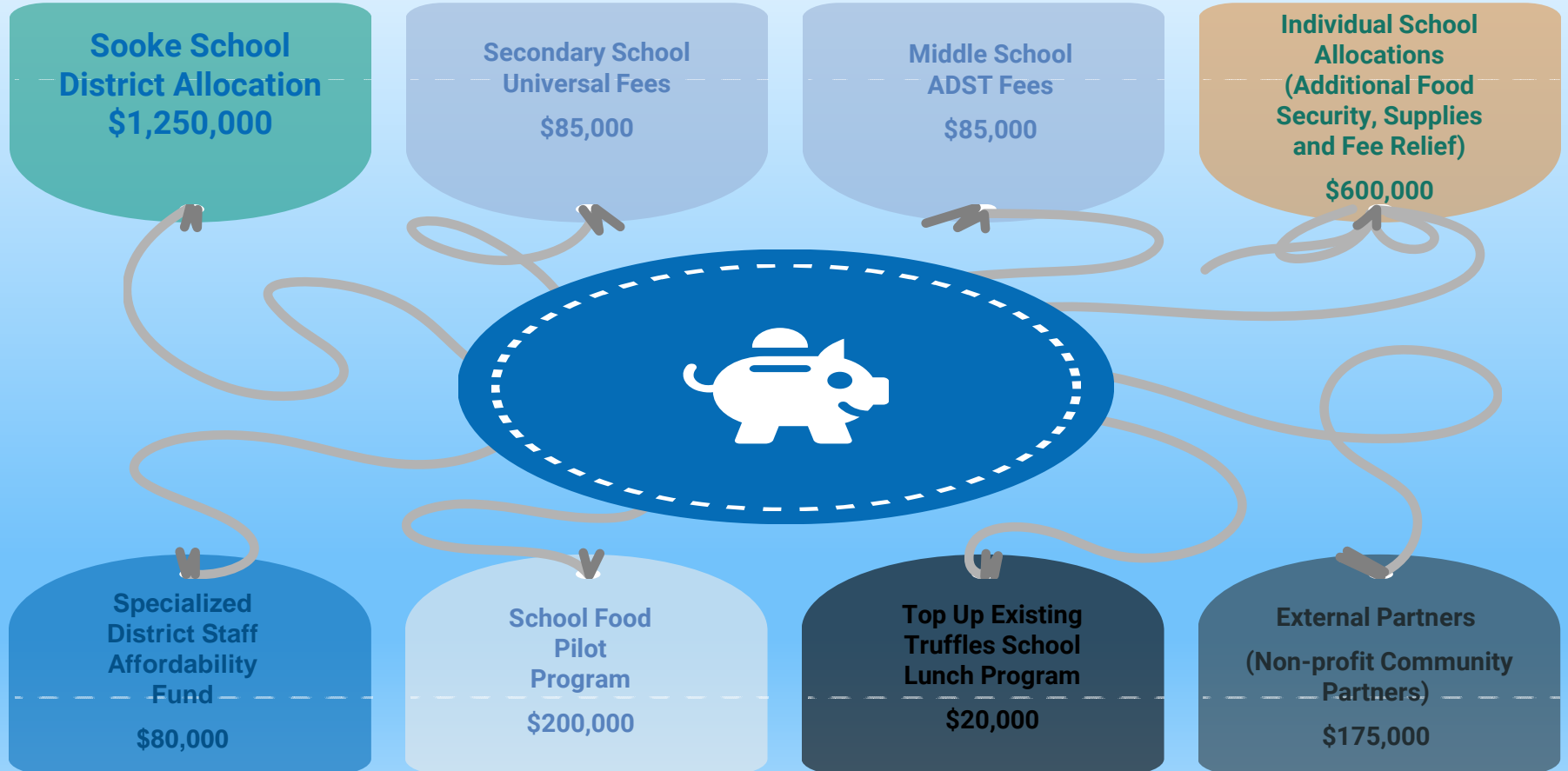
Tier 3: Specialized Staff Initiatives

Specialized Initiatives: Emergent Response Fund: \$80,000

The District has a dedicated group of professional that work directly with our most vulnerable students and families. These specialized staff will be provided an emergency fund to respond to significant hardships that unexpectedly emerge during the year and will provide them the resources to respond in a time sensitive and impactful manner.

Initiatives will be organized and implemented at the school and district level by these specialized staff including, but not limited to, our Safe and Healthy Schools team, in particular our team of School Based Social Workers. Initiatives will focus on additional efforts to address food security, school supply costs, additional fee relief, access to clothing and equipment required for meaningful participation in school-based programs and activities by those students and families most in need.

Student and Family Affordability Fund: Budget Allocations



Implementation Roadmap

**Consultation and
Action Plan
Development**

1

**Action Phase One:
Initial Implementation**

3

**Action Phase Three:
Further Monitoring,
Adaptation and Reporting**

5

**Presentation of
Action Plan to
Stakeholders**

2

**Action Phase Two:
Monitoring,
Adaptation and
Reporting**

4

**Action Phase Four:
Finalizing Implementation and
Reporting to Ministry and Stakeholders**

6